



Massachusetts Archaeological Society

SOUTHEAST CHAPTER

Tonya Largy M.A.

“Wayland Uncovered: Archaeological Evidence of Our Pre-Colonial History”

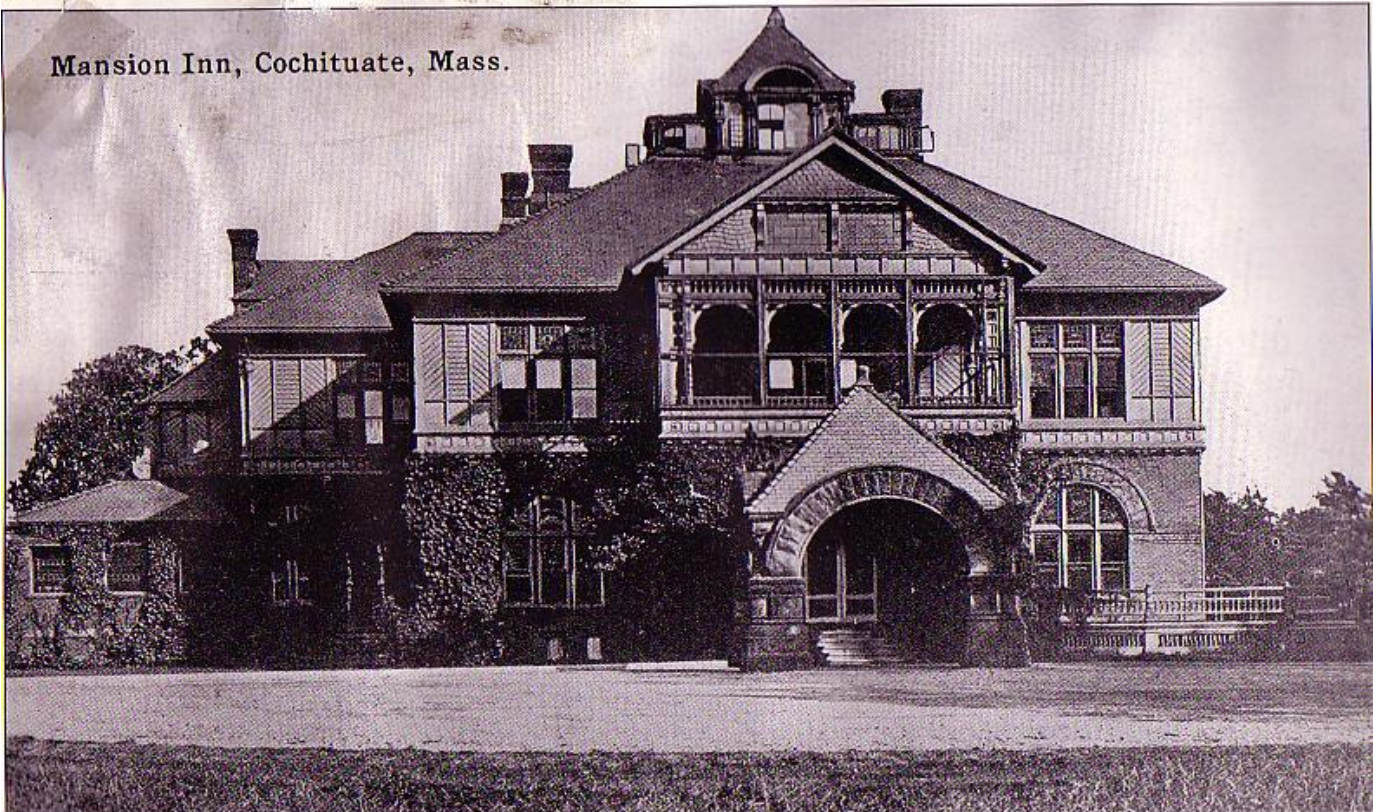
Native Americans came into what is now Wayland sometime after the glacier receded.

Wayland is the first settlement of Sudbury Plantation settled in 1638.

Since 1978, five excavations of pre-contact sites have been carried out under state permit by the Wayland Archaeology Group.

A sixth excavation, a Late Archaic site was first conducted by avocational archeologist in the late 1950's took place at Mansion Inn

Mansion Inn, Cochrasset, Mass.





Massachusetts Archaeological Society

SOUTHEAST CHAPTER

DIGGING UP THE PAST

The Southeast Chapter Offers Monthly Presentations
Covering Archaeological and Historic Topics.

*Meetings, Presentations and a Look Around the
Robbins Museum are Free and Open to the Public*

Wednesday, May 10, 2017 7:00 PM

**The Massachusetts Archaeological Society's
Robbins Museum**

17 Jackson Street, Middleboro MA

Tonya Largy M.A.

**“Wayland Uncovered: Archaeological Evidence of
Our Pre-Colonial History”**

Tonya is an Archaeological Consultant specializing in analysis of plant and animal remains from Archaeological Sites and is also on the staff of the Zooarchaeology Laboratory, Peabody Museum, Harvard University.

Tonya is a member of the Massachusetts Archaeological Society and has been active in Massachusetts Archaeology since the late 1970's.

Join Tonya as she discusses Native Americans in Wayland sometime after the glacier receded. Wayland is the first settlement of Sudbury Plantation settled in 1638. Since 1978, five excavations of pre-contact sites have been carried out under state permit by the Wayland Archaeology Group.